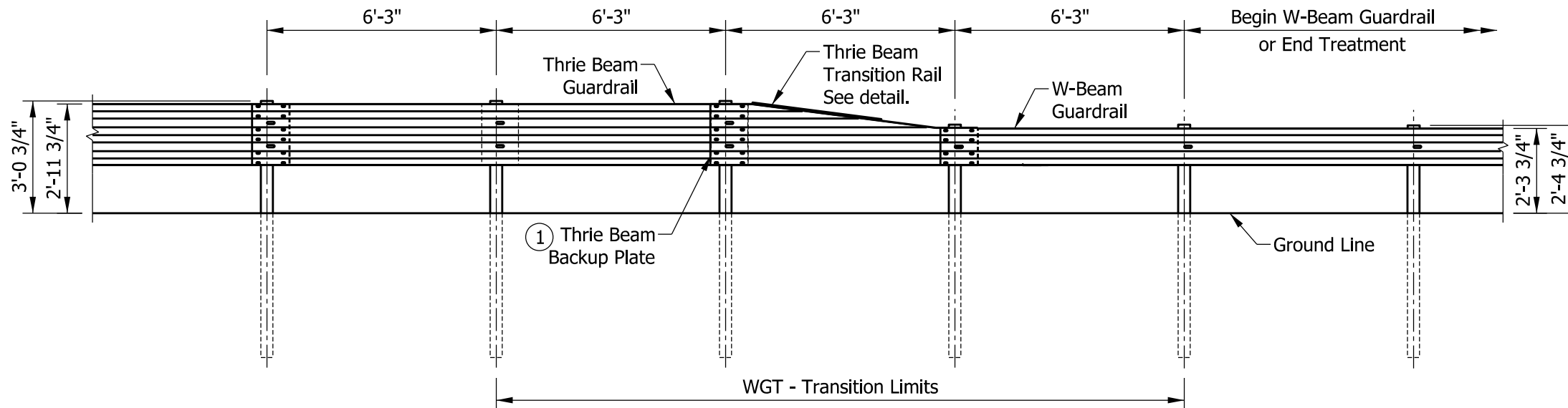
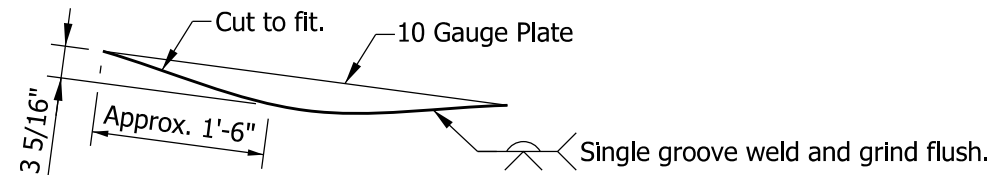


PLAN

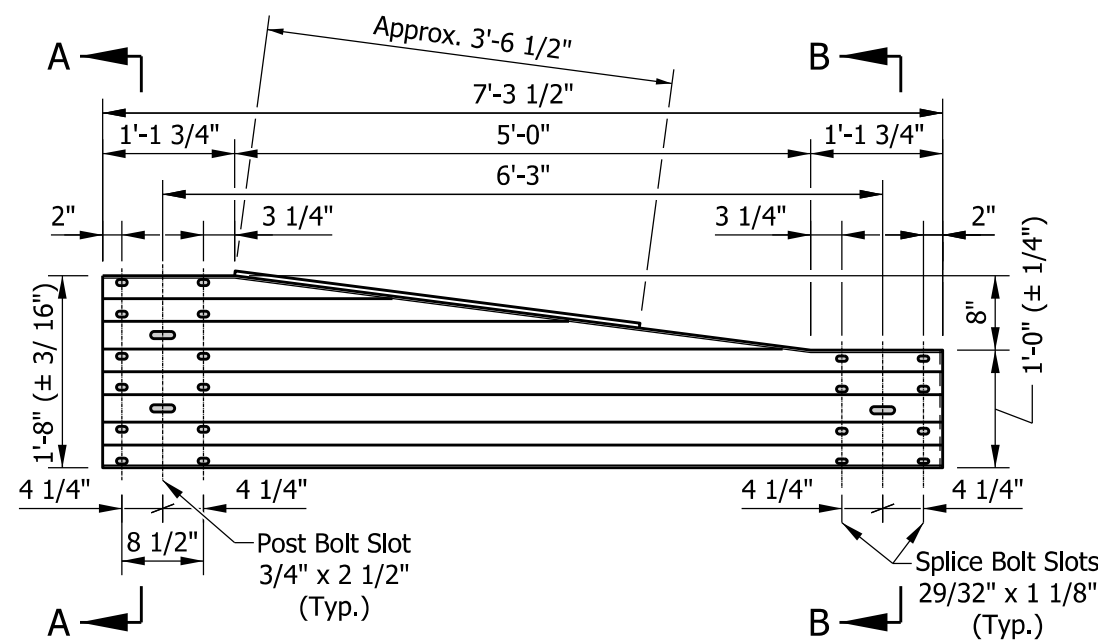


ELEVATION

THRIE BEAM TO W-BEAM GUARDRAIL TRANSITION



CAP PLATE PLAN



ELEVATION

THRIE BEAM TRANSITION RAIL

⑤ Cross section dimensions match thrie beam typical section.

SECTION A-A




Cross section dimensions match W-beam typical section. ②

SECTION B-B

NOTES:

- ① See Standard Drawing E 601-MTGR-01 for Thrie Beam Guardrail details. Thrie beam backup plate required at posts where there is no thrie-beam splice and at other locations as shown.
- ② See Standard Drawing E 601-WBGC-01 for W-Beam Guardrail Components.
3. See Standard Drawings E 601-WBGA-01 through -03 for W-Beam Guardrail Assembly details.
4. Slope on thrie beam transition shall be reversed where thrie beam to W-beam guardrail relative orientation is opposite to that shown hereon.
- ⑤ See Standard Drawing Series E 601-TBGC for Thrie Beam Rail Section.

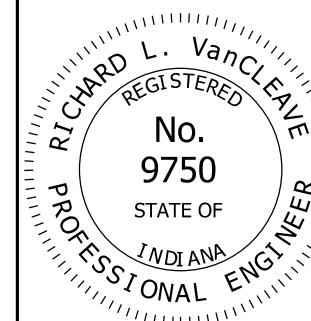
LEGEND:

-  - W 6 x 9 Post
-  - W 14 x 22 Blockout
-  - Timber or Composite W-Beam Blockout

INDIANA DEPARTMENT OF TRANSPORTATION

W-BEAM GUARDRAIL TO
THRIE BEAM GUARDRAIL
TRANSITION, WGT
SEPTEMBER 2014

STANDARD DRAWING NO. E 601-TWGT-01



/s/ Richard L. VanCleave 02/20/14

DESIGN STANDARDS ENGINEER DATE

/s/ Mark A. Miller 03/03/14

CHIEF ENGINEER DATE